

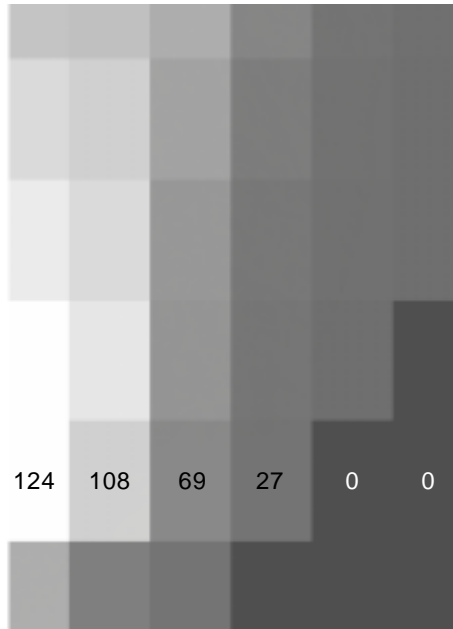
# Automatic Stereo Smoothing

Viewing the anaglyph illustrations below in stereo dramatically illustrates that accurately georeferenced satellite images, orthophotos, and maps of any resolution for anywhere in the world can be automatically viewed in smooth, high-quality stereo. Simply make sure that the TNT 90-meter Global and 30-meter USA elevation tilesets, provided FREE with each TNT professional product, are in the appropriate directory

(or use your own local DEMs). When you press the Stereo icon button on the View, the DEM you have chosen to be the default will be automatically used as the terrain layer and smoothed using bilinear interpolation to match the screen resolution of the image in the current view. This terrain smoothing is automatically applied for any stereo viewing device and to anaglyph prints.



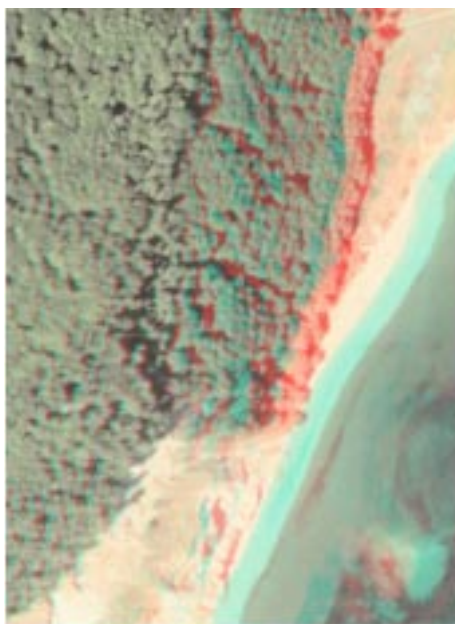
Topographic map of seacliff area used in these illustrations. 20 foot contours and 111 meters (367 feet) of relief.



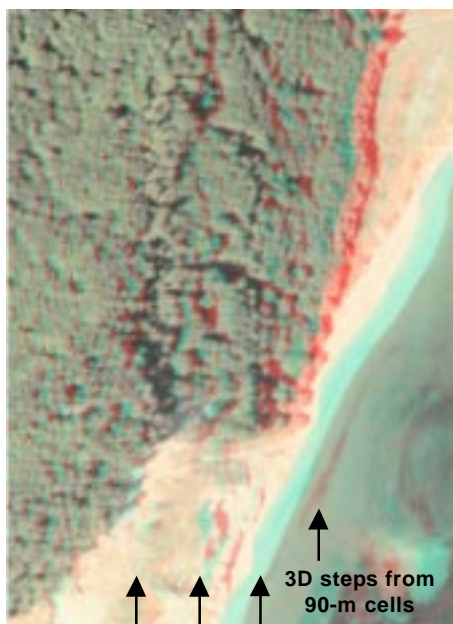
FREE Global 90-m TNT Elevation Tileset for the seacliff area. Cell size 62 m by 93 m. Elevations in meters.



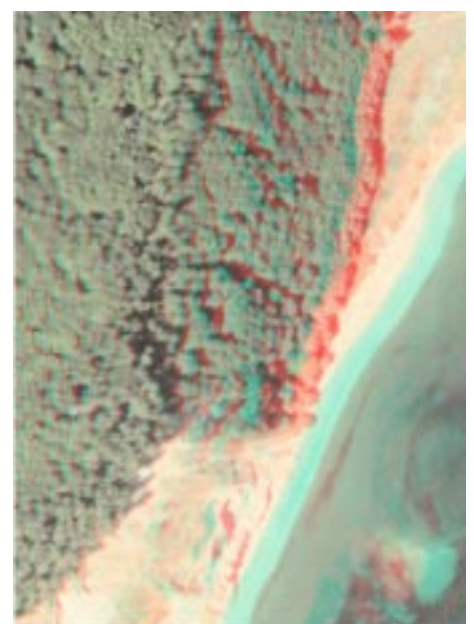
1-m surface automatically interpolated in the stereo view of the seacliff area illustrated below.



Stereo of 1-meter orthoimage at 1X zoom using LIDAR-derived terrain layer with cell size 2.3 by 3.4 meters.



Stereo of 1-meter image using 90-meter elevation cells shown without interpolation as illustrated above.



Smoothed stereo image with automatic interpolation of the 90-meter elevation cells illustrated above.