

System

Using Geospatial Catalogs

The TNT products let you select objects for viewing and analysis by their geographic location or by their location on your drive or local network.

Geocatalogs. The geographic method can be used to select from all your own geodata layers or for web layers published by a Web Map Service (WMS) or ArcIMS. Selection of local geodata by geographic location requires that you catalog the extents, properties, and physical location of all georeferenced layers, objects, and files. You make and update the catalog(s) for the local layers you want to select geographically (see the Technical Guide entitled *System: Making Geospatial Catalogs*). MicroImages maintains the catalogs for geographic selection of WMS and ArcIMS layers (see the TechGuide entitled *System: TNT Product WMS and ArcIMS Capabilities*).

Select Objects Window. Selection by file location and geographic location are integrated into a single, standard TNT Select Objects dialog. One tabbed panel is used for browsing your drives and network to locate files. This panel is the default when the Select Objects window opens. Three additional tabbed panels work together to locate objects geographically: Catalog Search, Catalog Results, and Catalog List. The Catalog Search panel lets you search for text or geographic coordinates in the catalogs you have selected on the Catalog List panel. The Catalog Results panel lists all geocatalog entries that satisfy your search criteria. If you have not specified any limitations on the Catalog Search panel, the full listing of all selected catalogs will be presented on the Catalog Results panel.

Catalog Search

The Catalog Search panel lets you specify parameters to restrict the number of objects returned from the selected

catalogs. You can search object names, descriptions, and file paths for text you enter or use geographic parameters to narrow your search. You can enter coordinates to narrow

your search geographically or match the coordinates from the layers in a group you have already displayed or from other objects/files you select to provide the coordinates. The options available on this tabbed panel are discussed further in the TechGuide entitled *System: Searching Geospatial Catalogs*.

Catalog Results

The Catalog Results panel lists all the objects/files that match your catalog search. These matches can range from the full contents of the catalog to no objects, one object, or just a few objects. If no criteria are specified on the Catalog Search panel, the entire contents of all catalogs selected on the Catalog List panel will appear on the Catalog Results panel. No search criteria are specified by default. For additional information on the options on the Catalog Search panel see the TechGuide entitled *System: Searching Geospatial Catalogs*.

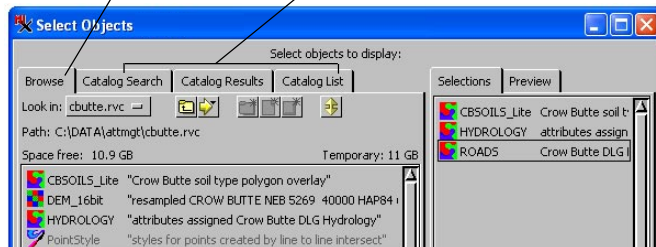
Selecting Geodata Layers.

The Catalog Results panel has left-click functions and right-click menus that let you customize your view of the results. A double-click on an item in the list or a single left-click on an item followed by a click on the

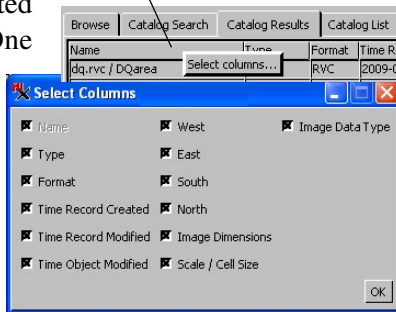
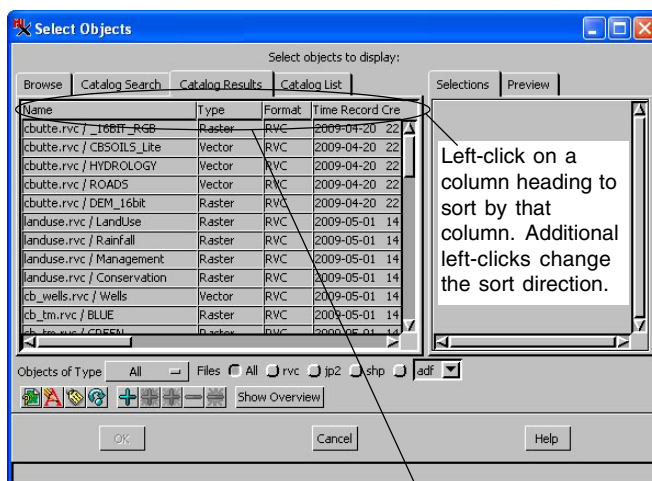
Add icon adds the catalog entry to the selections for the process in the Select Objects window.

Use this tabbed panel to browse your local drives and network to locate objects for selection.

Use these tabbed panels to locate objects geographically.



Standard Object Selection window in the TNT products

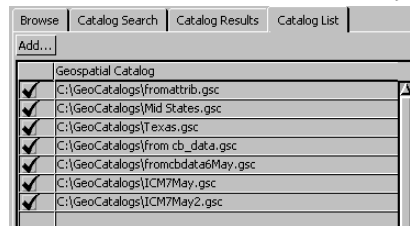


Right-click on any column heading and choose Select Columns to choose the information displayed on the Catalog Results panel. You can use standard table column manipulation techniques to resize and change the order of the fields on the Catalog Results panel.

Rearranging Layer List Columns. A left-click on any of the column headings on the Catalog Results panel sorts the list by that column. A subsequent click on the same heading sorts the column in reverse order. A right-click on any of the column headings provides a menu with a single Select Columns choice. This choice opens a Select Columns window (shown on the preceding page) that lets you choose which of the 13 available columns of information you want displayed on the Catalog Results panel. The Name column cannot be turned off, but the other 12 selections are optional. All are on by default. You can change the order and the width of the columns shown using the same techniques used in tabular view where column order is changed by clicking on a column heading and dragging it in the desired direction or clicking over the separator to the right of a column and dragging to adjust the column width. The cursor changes to the double-headed arrow shape when it is active for adjusting column width.

Catalog List

You and/or your organization can use the Geospatial Catalog Manager to create multiple geocatalogs that organize geodata by project, geographic area, permitted access, or simply all available georeferenced files. The Catalog List panel is used to select the geocatalogs you have generated with the Geospatial Catalog Manager you want to include in the current selection procedure. All available geocatalogs are automatically shown by name in this panel. Catalog names are preceded by a checkbox. Geocatalogs that are selected by a check in the checkbox preceding their name are used for the current search procedure defined on the Catalog Search panel.



Simplifying Search Results

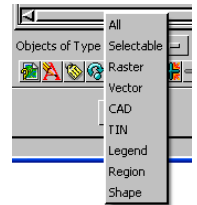
You can quickly simplify your list of geodata files from browsing or searching using the Objects of Type and Files extension options. The options that appear in this line



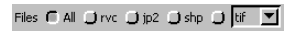
below the selection panels are used to filter the files and objects you see in the Browse and Catalog Results panels. These options can be set at any time regardless of the panel you are currently viewing. Changes in these op-

tions are applied immediately if currently viewing the Browse or Catalog Results panel or are applied the next time these panels are viewed.

Filter by Data Type. The Objects of Type option menu lets you choose whether to show all object types or only individual geodata types (raster, vector, shape, and so on). Note that this setting interacts with your Files setting. Shapefiles only contain shape objects; if Objects of Type is set to any object type other than shape, shapefiles will not be shown in the list. Similarly, only rasters are found in *.jp2 and *.sid files.



Filter by Extension. The Files radio buttons let you choose whether to show geodata files with any TNT directly-supported extension in the Browse or Catalog Results tabbed panels or



to show only files with a specified extension. The option to show only RVC files is always present in this line. The additional extensions that are shown on this line depend on your most recent choices from the file extension menu.

Filter by Process. The Objects of Type menu lists all of the object types that can be selected for use in the current, specific TNT process that opened the Select Object window. For example, all geodata object types are on this menu in the Display, the Raster Extract process choices are All and Raster, and the same menu in the Merge to Vector process has all the choices available in Display except Raster.

The Files extension option menu lists all file types supported for direct use that are appropriate for the current process. All file types supported for direct use in the TNT products are shown on this menu in the Display process (currently 44), only geometric file types are shown for Merge to Vector, and only raster file extensions are shown in Raster Extract. You can change your setting for the object/file type to show in the list after the results of your search are found and reduce and simplify the list's contents accordingly. See the TechGuide entitled *System: File Type Selection Options* for more information on this feature.

