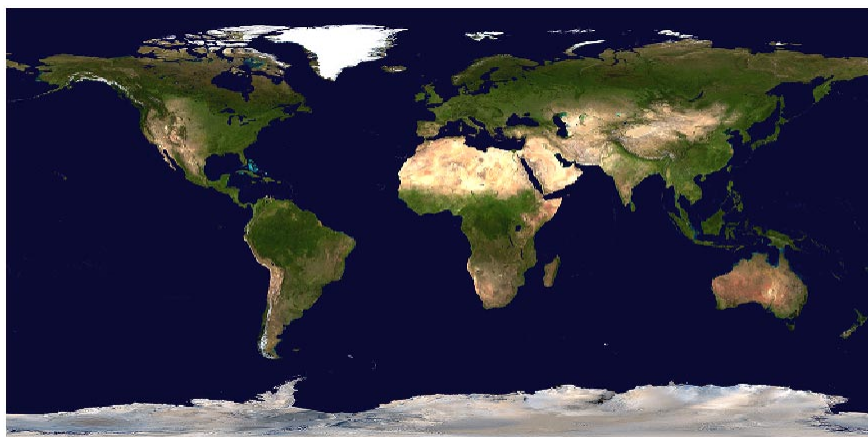


# Global Data Sets

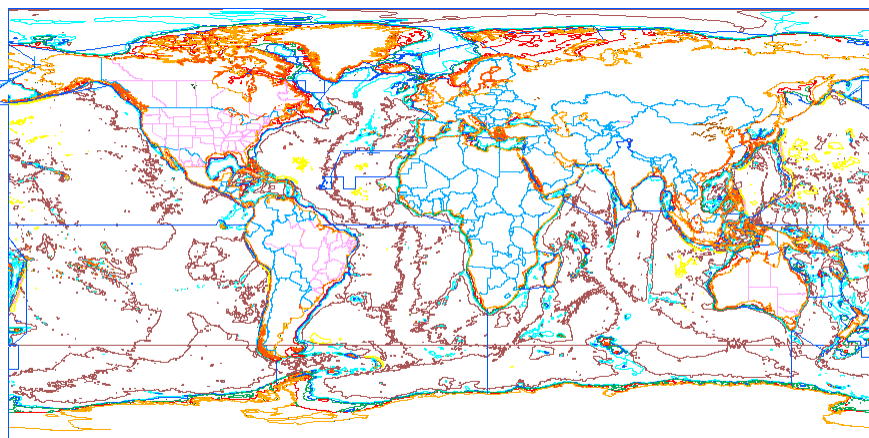
MicroImages has prepared three Global Data Sets centered on the Greenwich meridian in MicroImages' TNT Project File format for distribution on a single DVD: a World 1 km Color Image, World 1:1,000,000 Map Features, and World 1 km Elevation. Each is georeferenced to Latitude / Longitude with the WGS1984 datum. Full credits and more detailed information for each Global Data Set are provided on the DVD.

TNT Global Data Sets require V6.9 or later of the TNT products.

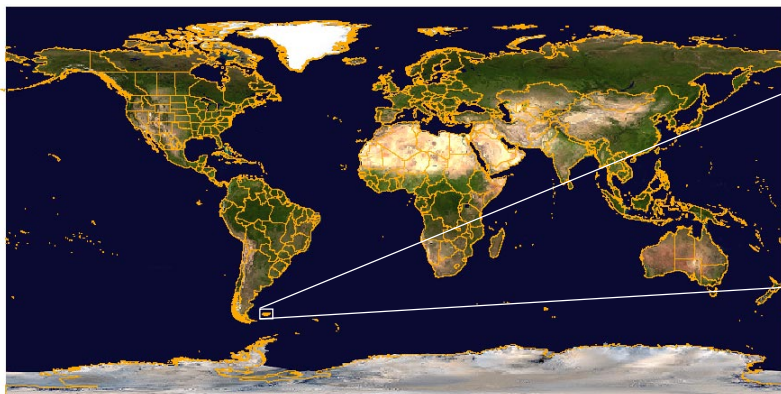
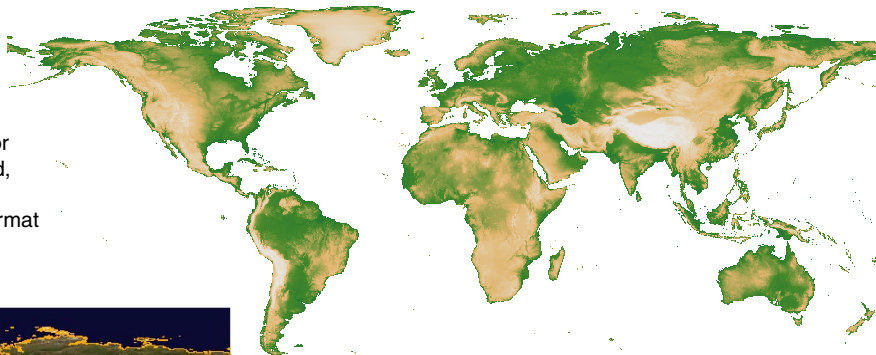
The World 1 km Color Image was prepared from the Visible Earth (Blue Marble: Land Surface, Shallow Water, and Shaded Topography) assembled at the NASA Goddard Space Flight Center from MODIS satellite data. It has been mosaicked in TNTmips into a single TNT raster object with global extents and georeferenced. MicroImages is distributing the image in the TNT products' Project File format with embedded lossless JPEG2000 compression.



The World 1:1,000,000 Map Features vector objects were created from VMap0 data. VMap0 is an updated and improved version of the National Geospatial-Intelligence Agency's (NGA, formerly NIMA) Digital Chart of the World (DCW®), which is organized into four libraries to represent quadrants of the earth. These libraries provide approximately 130,000 files representing various map themes: Boundaries, Elevation, Hydrography, Industry, Physiography, Population, Transportation, Utilities, Vegetation, and Data Quality. TNTmips was used to merge all these files into 10 TNT Project Files, which each correspond to a theme and contain several global vector objects. The eight global vector objects created for the Boundaries theme are shown here: Administrative Areas, Political Boundary Lines, Oceans/Seas, Coastlines, Depth Contours, Barrier Line Features, Political Boundary Point Features, and Boundary Coverage Text.



The World 1 km Elevation raster object was prepared from GTOPO30 data. GTOPO30 is a global Digital Elevation Model (DEM) resulting from a collaborative effort over a three year period led by the US Geological Survey's EROS Data Center in Sioux Falls, South Dakota. GTOPO30 was derived from a variety of raster and vector sources. The data was imported as 33 pieces, mosaicked, and had a color map applied in TNTmips. The World 1 km Elevation is distributed in the TNT products' Project File format with embedded lossless JPEG2000 compression.



Political boundaries in a Map Features object overlaid in TNTmips on the World Color Image (left) with an enlargement of the Falkland Islands, or Islas Malvinas, (above) to show how well they overlay. A DataTip for an island off the coast of East Falkland, or Isla Soledad, is shown.