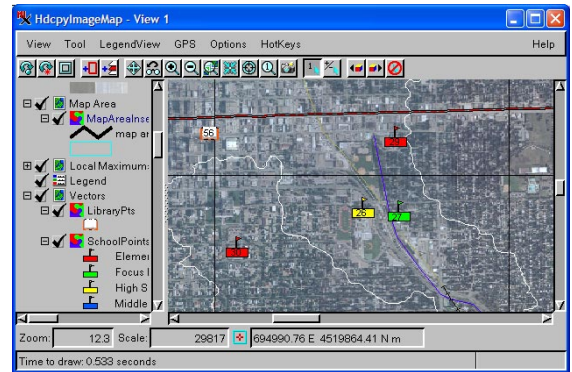


Viewing Geodata

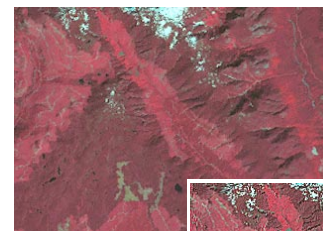
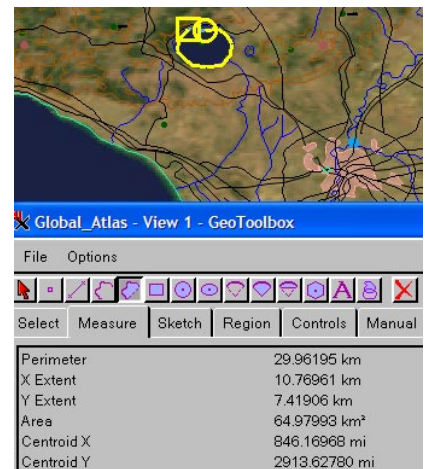
The TNT products offer a level of geodata and geospatial process integration unmatched in any other professional system. The integrated visualization features detailed below are available in TNT's Display and Editor processes, as well as any other process that incorporates a View window. You can precisely overlay layers in a variety of data types and a multitude of Coordinate Reference Systems for an integrated geospatial display in one or more View windows.

Integrated Visualization Highlights:

- Incorporate any combination of raster, vector, shape, CAD, TIN, and pin map geodata layers
- Include layers in a wide variety of external formats without importing (e.g., JP2, MrSID, GeoTIFF, shapefile, DGN, DXF, geodatabases)
- Include map and image components published on the Internet by a Web Map Service (WMS) and/or an ArcIMS
- View any TNT display in Google Earth by rendering it to KML
- Incorporate 3D and anaglyph layers in your displays
- Directly overlay map and image components in any number of map projections to match a target projection
- Interactive LegendView for the identification and management of layers
- Use the GeoToolbox to seamlessly switch between selection, measuring, sketching, and region creation
- Integrated filtering of raster layers to sharpen, smooth, and detect edges
- Use unique, compressed tileset data structure for fast display of very large raster objects even from DVD, intranet, or Internet (put a terabyte on DVD)
- Use transparency effects to view underlying imagery through overlays
- Pan and scroll over full resolution, large raster displays and/or large-scale geometric detail
- Display and print at any map scale with screen size calibration for accurate display scaling
- Use map scale controlled visibility to reveal high resolution and element detail only when meaningful
- Add map grids in one or more projections with control over coordinate display format
- Display TIN layers as networks or contours using optional display settings
- Create pinmaps from any database table that includes pin coordinates in internal or a variety of external formats
- Use GeoLocking feature to scroll and zoom multiple views in tandem
- Use View-in-View tool to compare sets of layers within a single view



Complex layout with LegendView



unfiltered



high pass sharpening filter applied

