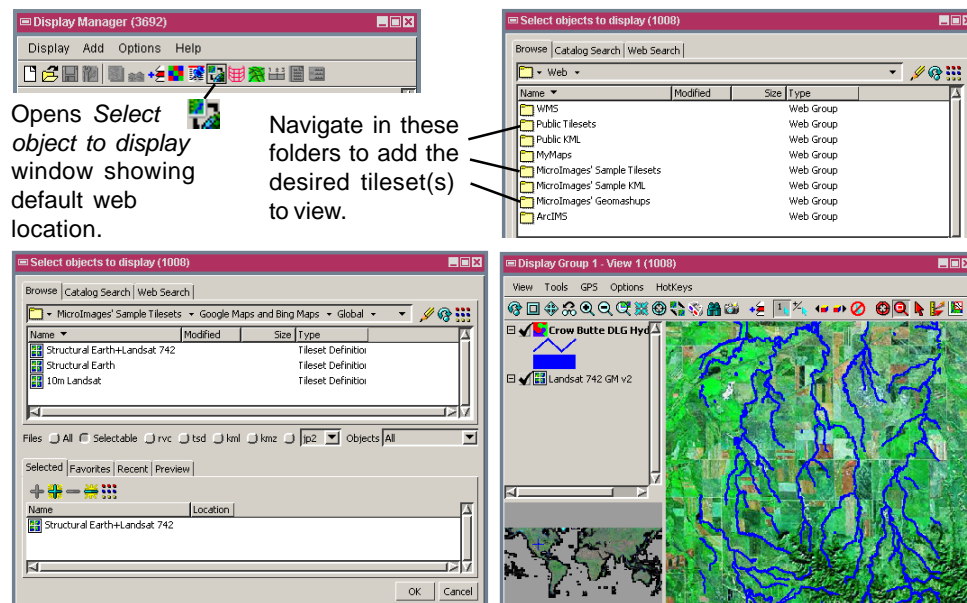


Add Internet Tilesets to View

DID YOU KNOW . . . you can select tileset layers from the Internet for viewing alone or in combination with local map and image layers?

What Adding Internet Tilesets to View Gives You

- Reference layers for georeferencing, tracing features, editing geometric layers
- Add maps and images from TNT's list of reference tilesets
- Use a tileset by pasting in its web URL
- Use recent list to reselect previously viewed tilesets
- Add a tileset to your own favorites list



The illustration above shows a Google Maps Landsat tileset selected from MicroImages' list of tilesets for display.

The illustration above shows a local vector layer displayed over the Landsat 742 tileset.

How to Add Internet Tilesets to View

- Click on the *Add Web Layer* icon.
- Choose the desired tileset layer in the *Select objects to display* window.
- Click on the *Add* button and then on the *OK* button; or
- Click on the *Enter Path/URL* icon in the *Select objects to display* window.
- Directly enter or paste the URL for a known TSD file into the *URL* field.
- Press <Enter> on the keyboard, then click on the *OK* button.

WANT TO KNOW MORE?

See the Technical Guide entitled *Spatial Display:*

Adding Tilesets to Your View

